

Features

- Safe solution for laminate and parquet flooring
- Very low thickness
- Ideal heat distribution due to aluminium foil
- Cost and energy saving system
- Simple installation as to be laid dry without glue

Description

Application

The ultrathin AluPRO heating mat covered with aluminium foil on both sides is applied as a supplementary system for comfortable floor heating. The system is intended for use under removable floor covering, e.g. laminate, engineered wood, parquet or carpet. It is applicable for various types of premises and is particularly suitable in the course of modernisation, especially when it is important to keep a low thickness of the floor construction. The layout is quite easy due to floating installation without glue. Installation requires covering the subfloor with a sustainable and temperature-resistant impact sound insulation or other soft floor insulation before.

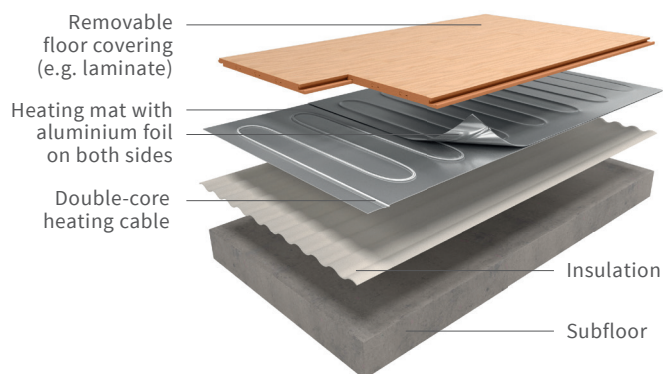
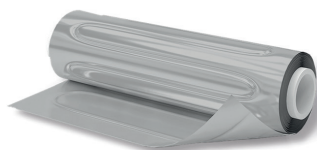
Construction

The heating mat AluPRO is based on double-core thin heating cable, sandwiched between two layers of specially reinforced aluminium foil. The heating conductors are arranged meandering, and thus with constant cable-to-cable distance. The AluPRO heating mat is equipped with a power-supply cable and a reliable coupling. Thanks to the cable fixation between the two layers of aluminium foil there is no need to adjust the wire spacings.

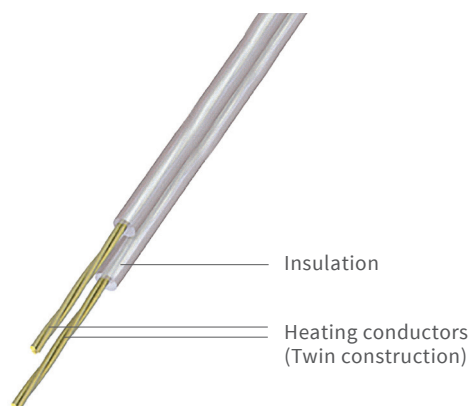
The coated aluminium foil evenly distributes the warmth of the cable onto the floor, thus 'hot spots' will not appear. The heating mat can be installed either sided as there is no predefined upper or bottom side. The 'Twin' technology with only one connection wire makes installation easier and reduces installation cost.

Application

Application		Installation	
Direct heating		Mortar / screed	
Comfort heating	●	Tile adhesive layer	
		Floating	●



Cable design



Technical data

Rated voltage	230 V AC
Nom. power output	80, 150 W/m ²
Maximum operation temperature	+80 °C
Minimum operation temperature	-15 °C
Minimum storage temperature	-30 °C
Minimum installation temperature	0 °C
Installation width	0.5 m
Cold lead length	3 m
Heating cable diameter	~ 1.2 mm
IP protection class	IPX7
Certifications	CE RoHS

Ordering information

Heating mat type	AluPRO-300-2.0/150
Power, W	
Area, m ²	
Power per square meter, W/m ²	

Product references

Double-core heating mat with aluminium foil AluPRO 80 W/m²

Mat type	Mat width, m	Mat length, m	Area, m ²	Power, W	Total resistance (Ω), Nom. @ +20°C (-5%, +10%)	Current, A
AluPRO-80-1.0/80	0.5	2	1.0	80	661.3	0.35
AluPRO-120-1.5/80	0.5	3	1.5	120	440.8	0.52
AluPRO-160-2.0/80	0.5	4	2.0	160	330.6	0.70
AluPRO-200-2.5/80	0.5	5	2.5	200	264.5	0.87
AluPRO-240-3.0/80	0.5	6	3.0	240	220.4	1.04
AluPRO-280-3.5/80	0.5	7	3.5	280	188.9	1.22
AluPRO-320-4.0/80	0.5	8	4.0	320	165.3	1.39
AluPRO-360-4.5/80	0.5	9	4.5	360	146.9	1.57
AluPRO-400-5.0/80	0.5	10	5.0	400	132.3	1.74
AluPRO-480-6.0/80	0.5	12	6.0	480	110.2	2.09
AluPRO-560-7.0/80	0.5	14	7.0	560	94.5	2.43
AluPRO-640-8.0/80	0.5	16	8.0	640	82.7	2.78
AluPRO-720-9.0/80	0.5	18	9.0	720	73.5	3.13
AluPRO-800-10.0/80	0.5	20	10.0	800	66.1	3.48
AluPRO-960-12.0/80	0.5	24	12.0	960	55.1	4.17
AluPRO-1200-15.0/80	0.5	30	15.0	1200	44.1	5.22

Double-core heating mat with aluminium foil AluPRO 150 W/m²

Mat type	Mat width, m	Mat length, m	Area, m ²	Power, W	Total resistance (Ω), Nom. @ +20°C (-5%, +10%)	Current, A
AluPRO-150-1.0/150	0.5	2	1.0	150	352.7	0.65
AluPRO-225-1.5/150	0.5	3	1.5	225	235.1	0.98
AluPRO-300-2.0/150	0.5	4	2.0	300	176.3	1.30
AluPRO-375-2.5/150	0.5	5	2.5	375	141.1	1.63
AluPRO-450-3.0/150	0.5	6	3.0	450	117.6	1.96
AluPRO-525-3.5/150	0.5	7	3.5	525	100.7	2.28
AluPRO-600-4.0/150	0.5	8	4.0	600	88.2	2.61
AluPRO-675-4.5/150	0.5	9	4.5	675	78.4	2.93
AluPRO-750-5.0/150	0.5	10	5.0	750	70.5	3.26
AluPRO-900-6.0/150	0.5	12	6.0	900	58.8	3.91
AluPRO-1050-7.0/150	0.5	14	7.0	1050	50.4	4.57
AluPRO-1200-8.0/150	0.5	16	8.0	1200	44.1	5.22
AluPRO-1350-9.0/150	0.5	18	9.0	1350	39.2	5.87
AluPRO-1500-10.0/150	0.5	20	10.0	1500	35.3	6.52
AluPRO-1800-12.0/150	0.5	24	12.0	1800	29.4	7.83
AluPRO-2250-15.0/150	0.5	30	15.0	2250	23.5	9.78

Installation

Energy saving operation of the AluPRO aluminium heating mat is ensured by installing an electronic temperature controller with an appropriate floor temperature sensor. The floor sensor must be positioned inside a conduit. It should be placed at heating level directly underneath the heating mat by chiselling out a channel in the subfloor. The sensor should be centrally positioned between two

heating conductors, which is in the middle of a cable loop. The thermostat should be mounted on the wall in the same room with the heating installed. Applicable norms and rules as well as installation manuals must be observed. Always observe the flooring manufacturer's instructions on required temperature limits for the floor covering used (e.g. laminate, parquet).